



Wallingford-Swarthmore
SCHOOL DISTRICT

Superintendent's Report

School Board Meeting

SEPTEMBER 28, 2022

Presented by Wagner Marseille, Ed.D , Superintendent

200 S. Providence Road

Wallingford, PA 19086

wssd.org

Mission and Vision Statements

MISSION

The Wallingford-Swarthmore School District is committed to assuring the academic achievement and personal growth of all students within an environment that promotes:

- Respect for self and others
- Active engagement in learning
- Leadership in the global community
- The pursuit of excellence

VISION

Our vision is to develop a world-class school district that provides students with the skills to succeed in a changing global environment. This vision will be realized through a commitment to high-quality programs and continuous improvement based upon careful analysis and integration of the most effective practices.



| Focus Areas

Educational Affairs Update

Office of Teaching , Learning and Innovation - Mosakowski, Pratt, Benzing

Communications Audit/Website

Lindsey Norward, Communications & Community Relations Liaison



September Highlights

- **All five schools hosted Back-to-School Nights**
- **11 National Merit Semifinalists recognized this month**
 - Justin Bi
 - Nicholas Cardi
 - Alexander Chen
 - Atticus Clow-Mclaughlin
 - Sarah He
 - Gavin John
 - Eden Kaplinsky
 - Ava Manaker
 - Dania Maqbool
 - Jai Rastogi
 - Danny Zhang
- **Coach Gino Miraglia won his 200th girls' soccer game**

September Highlights

- **Suicide Prevention Month**

- Suicide Prevention Awareness Taskforce, Student Services & Counseling departments
- 988 Information and other resources at www.wssd.org/988

- **Curriculum, Instruction, Professional Learning Council**

- Our first meeting was held this month with teachers & administrators present from each building

- **Cultural Proficiency Equity Teacher Leaders**

- Our first meeting was held in August, and continued this month in conjunction with our partners at Penn



Frontline- My Learning Plan

Professional Observation and Evaluation platforms and collaboration resources for the 2022-2023 school year



Professional Learning

Meet each educator's unique needs with individual PD plans and relevant, targeted online or in-person learning opportunities.



Collaboration

Provide an online space for educators to collaborate, learn together, invite feedback and build a culture of learning.



Evaluation

Conduct transparent, defensible, growth-focused evaluations, and link results to professional learning plans and goals.



My Growth Journey

New in Frontline Professional Growth

Where I've Been

Where I Am Now

Where I'm Going

How I Get There

"Having pieces of evaluation and professional development now, all under one house, all tied together, it really allows us to have the most strategic and powerful impact you can have on the classroom, which ultimately comes back to the most optimal learning that's taking place."



Safety and Security

- **Installation of Electronic Fob Reading Door Openers at NPE, SRS, WES, on all access doors which will be integrated into our existing security system.**
 - ◆ CM3 will install Fob Readers on a total of 24 doors.

- **Installation of Electronic Sensor/Switches on all district exterior doors to detect when doors are propped open. The switches will be connected into our existing security system.**
 - ◆ ADT Commercial will add a total of 128 door position switches to the districts existing intrusion control panels.



GESA Project Debt Funding

A RESOLUTION AUTHORIZING THE ISSUANCE OF A GENERAL OBLIGATION NOTES IN THE AMOUNT OF UP TO FIVE MILLION DOLLARS (\$5,000,000)

Guaranteed Energy Savings Act (GESA) is a vehicle to decrease growing utility costs. This is accomplished through a progressive contracting process that enables mass upgrades of building components such as lighting, HVAC, water, etc. to be replaced through a budget neutral process. The cost of related debt service is guaranteed to be covered by energy savings – thus budget neutral.

WHEREAS Wallingford-Swarthmore School District, Delaware County, Pennsylvania (“School District” or “Local Government Unit”) has determined to undertake a project consisting of providing financing for: (1) the planning, designing, constructing, furnishing, installation and equipping of certain energy savings projects in connection with the School District’s existing buildings and facilities, and other capital improvements to school facilities and school buildings owned and operated by the School District; and (2) paying costs and expenses associated with the issuance of the Notes (collectively, the “Project”)

Athletic Fields

“Athletic facility planning is about more than developing a place to play ball. It’s about creating a destination that builds school and community pride, generates revenue, and provides economic benefits to the surrounding area. But to benefit, you need more than just a field with bleachers, and there’s no such thing as a one size fits all solution. Maximizing athletic facility benefits and meeting the needs of all users, begins with a deep understanding of your athletic programming needs and goals.”

“An ounce of prevention is worth a pound of cure.”



Athletic Fields

PROFESSIONAL DESIGN SERVICES AGREEMENT – Athletic Facilities Master Plan

- An agreement with ELA SPORT for Design and Consulting Services in the amount of \$26,800.00. ELA SPORT, a Division of ELA Group, LLC will develop an Athletic Facilities Master Plan for the entire Wallingford-Swarthmore School District.
 - Project Based Mapping - LiDAR mapping
 - Site Investigation
 - Project Programming and Planning Workshop
 - Schematic Design and Master Planning
- 3- 4 month timeline

PROFESSIONAL DESIGN SERVICES AGREEMENT – King Field Synthetic Turf Replacement and Stadium Modifications

- An agreement with ELA SPORT for Athletic Facility Consulting and Design Services in the amount of \$33,100.00. ELA SPORT, a Division of ELA Group, LLC will develop Plans and Specifications for Synthetic Turf Replacement and Stadium Modifications at King Field.
- Turf replacement and stadium modifications will begin in the Spring.

NPE



SRS



HENDERSON FIELD



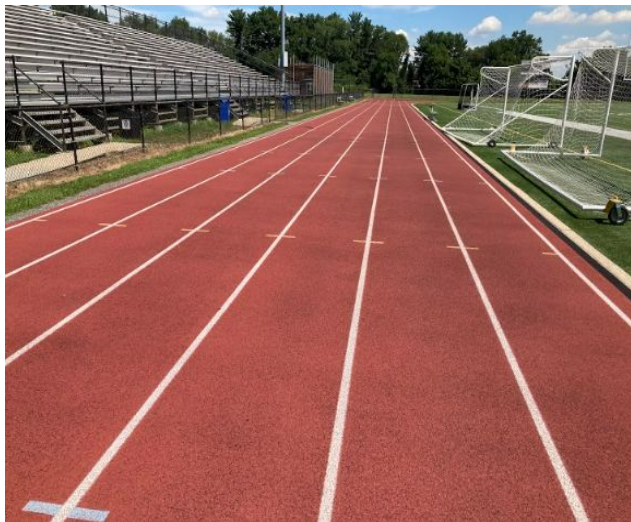
RUTGERS FIELD



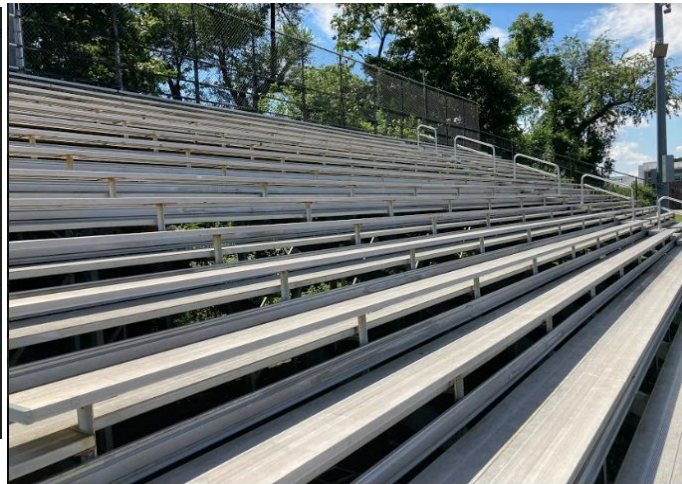
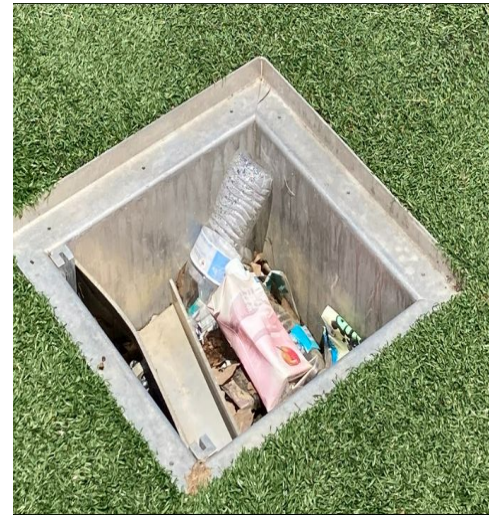
HS FIELD

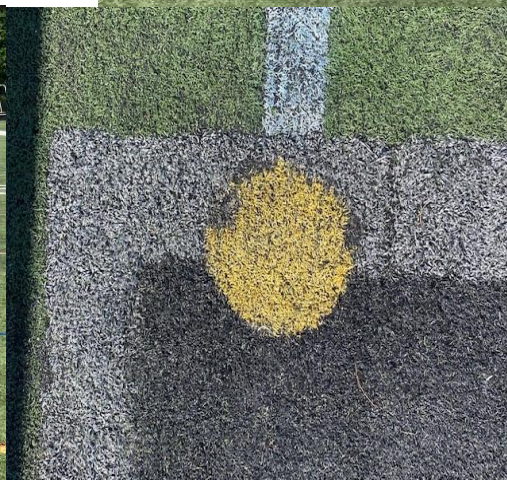


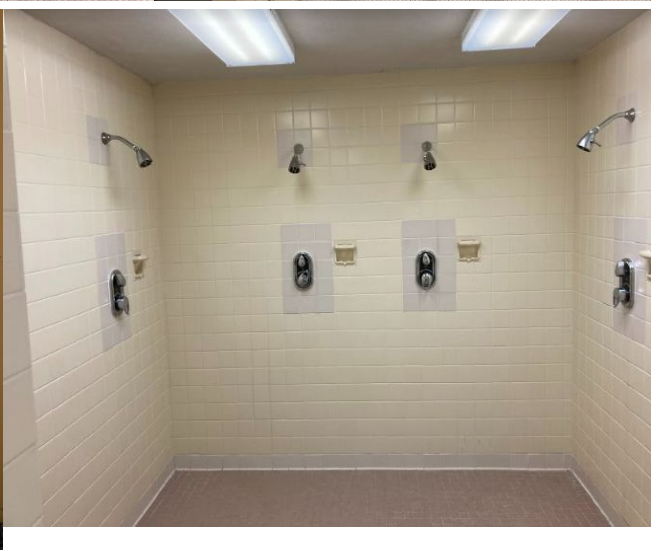
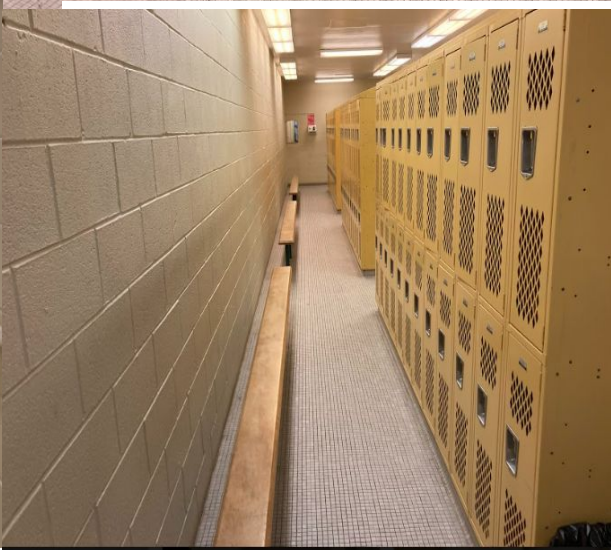
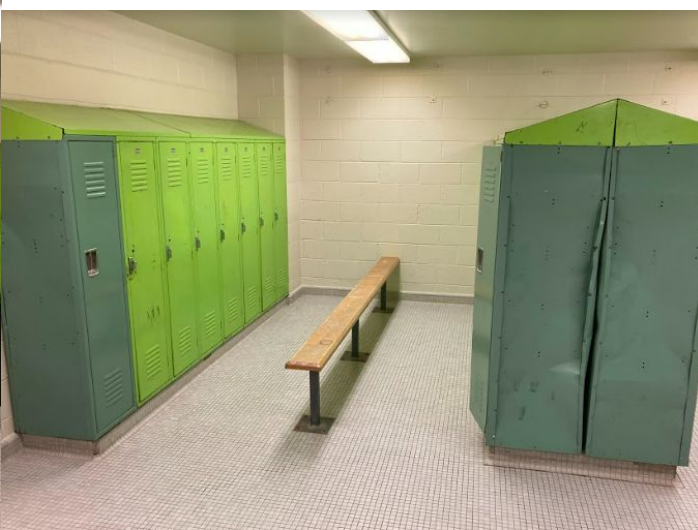




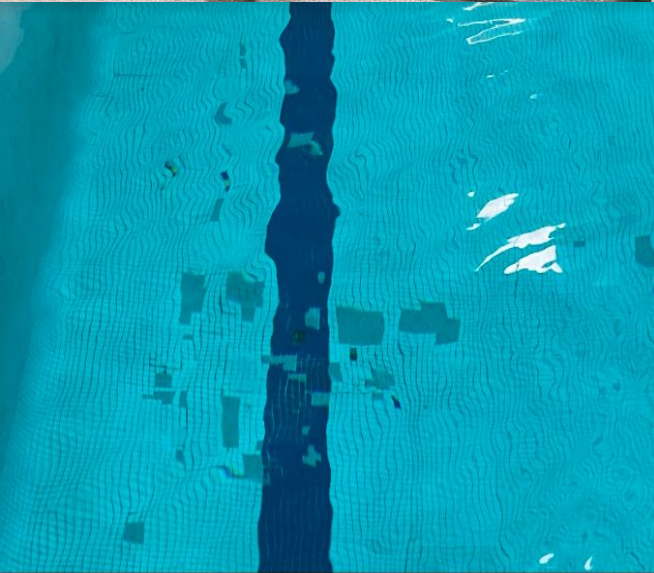














Important District Dates

OCTOBER 5 - Holiday - Schools Closed
(Offices Open)

OCTOBER 10 - Teacher In-Service-Schools Closed
(Offices Open)



Committee Dates

Policy Committee - Wednesday, September 29, 2022

Strath Haven Middle School, Room B-226 - 7:00 p.m.

Presentation and Discussion of Policies for Second Reading

Policy 220 – Student Expression/ Distribution & Posting of Materials

Policy 229 – Student Fundraising

Policy 707 – Use of School Facilities

Policy 913 – Non-School Organizations/ Groups/ Individuals

Policy 913.1 – Corporate Sponsorships, Partnerships, and Advertising

Presentation and Discussion of Policies for First Reading

Policy 206 – Attendance Areas and Assignment in District

Policy 805.2 – School Security Personnel



Special Board Meeting - Thursday, October 6, 2022

Strath Haven Middle School, Room B-226 - 6:30 p.m.

Notice is hereby given that a Special Meeting of the Board of School Directors of the Wallingford-Swarthmore School District will be held on Thursday, October 6, 2022 at 6:30 PM, in the Strath Haven Middle School Library, for the purpose of discussion and APPROVAL AND AWARD OF THE GUARANTEED ENERGY SERVICES AGREEMENT.

Committee Dates

Educational Affairs Committee - Thursday, October 6, 2022

Strath Haven Middle School Library - 7:00 p.m.

- Extended School Year (ESY)
- New Teacher Academy (NTA)
- “The First Four”

Facilities and Finance Committee - Wednesday, October 19, 2022

Strath Haven Middle School, Room B-226 - 7:00 p.m.

Regular Meeting - Board of School Directors - Tuesday, October 25, 2022

Strath Haven Middle School Library - 7:00 p.m.

